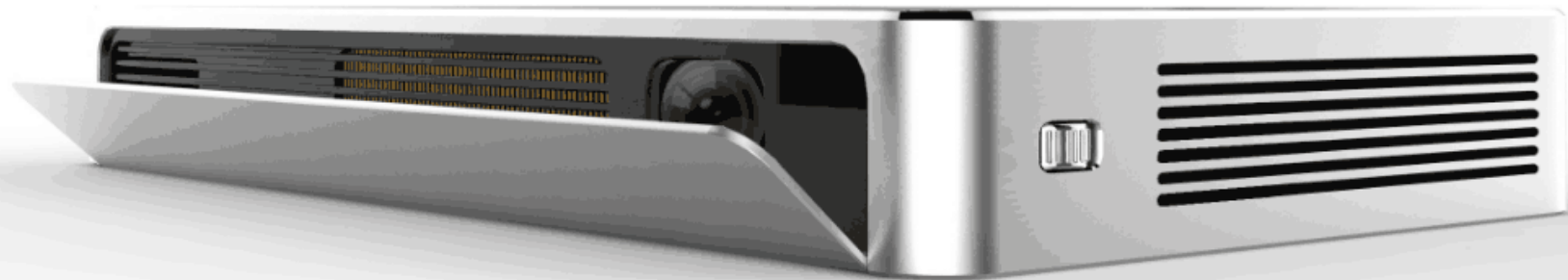


Hivista **Mongol**



www.hivista-optic.com



A mini-projector with LED light source and 3D technology, the Mongol Projector 3D gives a display size of up to 300" with a captivating brightness of 300 Lumens.

Connect directly via HDMI to any BLURAY player, Satellite Box or Gaming System. With superior resolution and spectacular video quality, the Mongol Projector 3D features cutting-edge DLP technology which ensures you witness the best a projector can offer. Most video formats are supported, including all major 3D movie formats.

Display Presentations, Websites, Videos, YouTube clips and Video Games from any DVD player, gaming device, computer, tablet, or smart phone with HD connectivity.

Play music and movies directly off USB flash disks and HDDs. The Mongol Projector has built-in stereo speakers and auto-focus.

However, if the full theater effect is what you crave connect it to an external speaker system via its AUX audio port.

Tiny Size, Real Pocket Projector.



No Mechanical keys, Avoid Wrong Operation

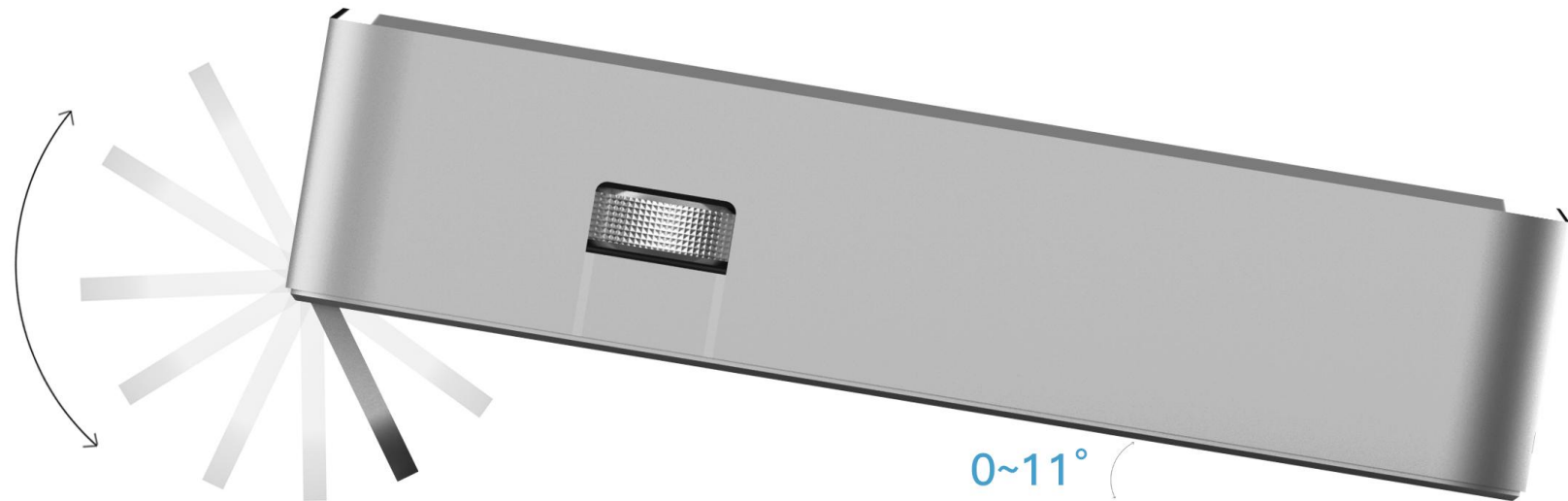




Interfaces are Simple and Easy to Use

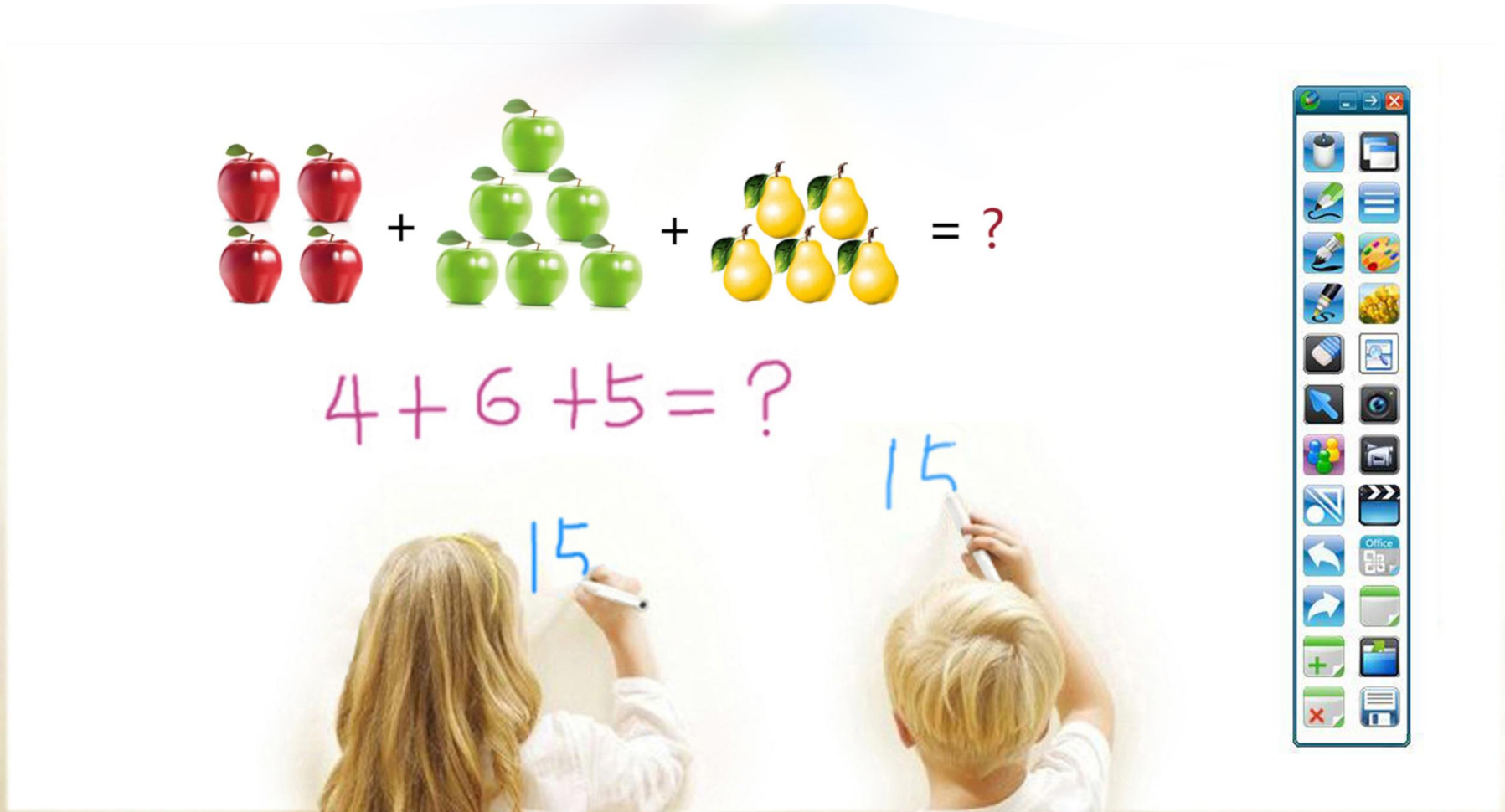
Take a Bracket, can be Adjusted Pitching Angle.

Except this, it's also a lens protection cover. Open it or close it, can start or shut down the projection meanwhile.



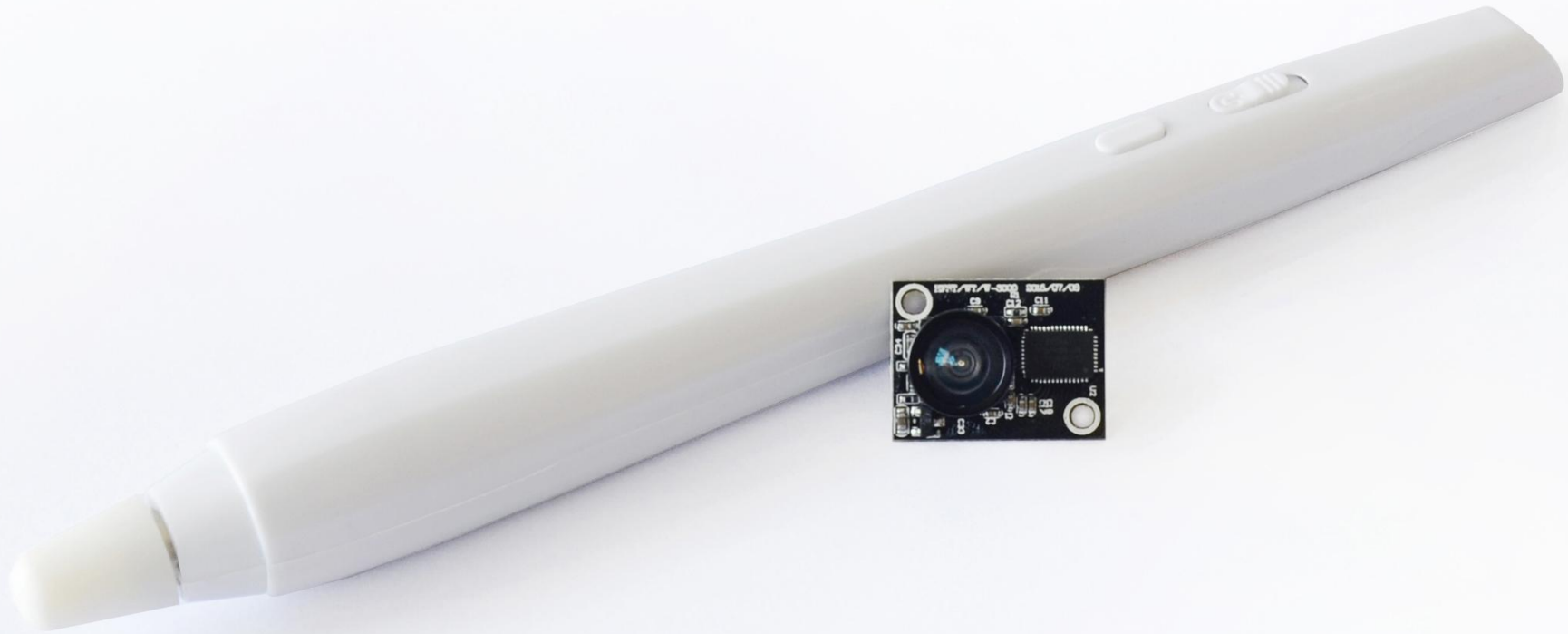
Interactive Function, the World' s No. 1

Compatible with Windows or Android system, support 64 people writing on Windows system and 2 people writing on Android system at the same time.



Android Interactive Module, Make Your Projector to be Interactive

It's the smallest interactive module in the world for 15mm*20mm. It complies to Android and Windows, fits LED, laser and so on projectors. Projector manufacturers can use it to change normal projectors into interactive projectors.



Complete Set of M4AI/WI



3D Glasses (Optional)

Super Power Adapter

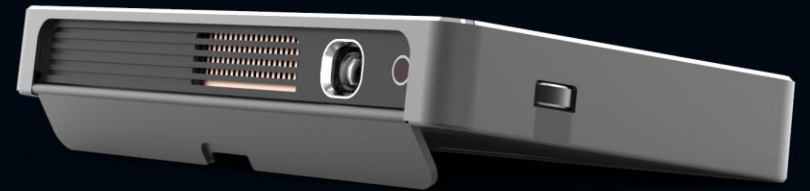
Light weight and Art Design, Portable for Business.

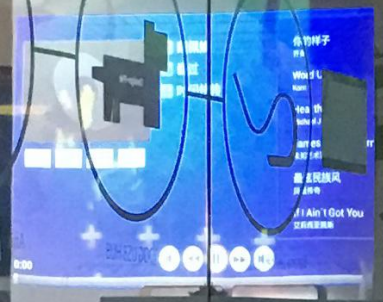


Magnetic Suction Connection



Gun for Game, Optional Accessories





Specifications

Model	M4A/M4AI/M4WI
Projection	
Projector Type	Projector for Home Theater & Business
Project Tech	DLP
Light Source	LED Lamp
Resolution	1280*720 (Support 1920*1080P and 4K display)
Support Resolution	1920*1080/4096*2304
Brightness	300 Lumens
Contrast	1000:1
Colors	17 Million Color
Projection Size	20-300 inch
Image Ratio	4:3/16:9/16:9
Projection Feature	Support 3D display, transfer 2D to 3D
Projection Distance	0.3-5M
Focus Mode	AF Mode/HF Model
Operation Method	Manual or Remote Control
Net Weight	0.5kg
Power Dissipation	40W
Input Power	19V , 2.5A

Product Dimension		191*106*24mm
OSD Language		Multi-Language
Input Terminal		USB/HDMI/DC
Output Terminal		3.5 stereo Speakers Headset*1
System		
Windows		Android
CPU	Intel 8300	4 core
Ram	2GB(4GB being optional)	2GB
Flash Memory	32GB(64GB being optional)	16GB
Operation System	Windows 10	4.2 or higher
Other Functions	Built-in WiFi (2.4GHz / 5GHz) and Bluetooth 4.0	Built-in WiFi 2.4GHz / 5GHz and Bluetooth 4.0
Interactive Function		
Movement Detection Technology	Infrared	
Active Area(max projection size)	300 inches	
Active Area(horizontal angle)	33+/- 2 degrees	
Active Area(vertical angle)	0-30 degrees	
Calibration Technology	Infrared Positioning	
Active Distance(from projection screen)	0.3 – 2m	
Power	DC 5V (USB)	
Power Consumption	< 1.5 W	

Business





DIE HÖCHSTEN BERGE UND...



... DIE TIEFSTEN OZEANE





Home





大規模螢幕上顯示的畫面，稱之為大規模顯示。大規模顯示可以視為第一個螢幕顯示，在大規模顯示上顯示的另外一個畫面，實際上都是一種與另一種或多種種類的內容交疊的顯示。

由於對一個既有的大規模顯示系統，需要多個螢幕顯示的，螢幕的顏色和亮度等值也是相關的，螢幕大小不一的，所以大規模顯示是之的顯示系統。

如何在大規模顯示系統中進行之顯示，使大規模顯示系統顯示的內容。



Education